



S-6500

TOUCHPAD DIGITAL DOOR LOCK

WITH FINGERPRINT READER

USER MANUAL

Notice

Please read this manual before installation and operation.

Safety precautions



Do not disassemble or alter the lock.

Disassembling the door lock may damage the product. Damage to the product caused by unauthorised persons may void the warranty.



Please keep the product away from water or any liquids.

If the product is exposed to water or liquids, please wipe the moisture off with a soft cloth. If moisture or foreign materials penetrate the product, remove the batteries immediately.



Please check the batteries every 6 months for leaks/cleanliness.

If leakage is discovered, please wipe out with a dry cloth and replace with new batteries. In case of exposure to leakage, wash affected skin area with soap and water immediately.



Do not clean the product with flammable materials such as alcohol, benzene or thinners.

Such materials may damage the surface of the lock or cause a fire.



Batteries should not be exposed directly to heat sources or submerged in water, because they may leak or explode, resulting in severe damage.

Do not use damaged batteries.



Do not allow the battery electrodes to make contact with metals such as keys, as the battery may overheat, causing an explosion or severe damage.



Please do not close the door with the deadbolt in the locked position.

It may damage the product or cause a malfunction.



Do not mix old and new batteries, or use different types of batteries.

Ensure the + and - ends of the batteries are positioned correctly. Incorrect positioning may cause leaks and/or an explosion.

Product features



Three way solution. (PIN code, Card / Fob, fingerprint)

Available to use PIN code as well as Card / Fob and fingerprint.



Voice guide and 3 step volume control system

Voice guide (operation status, menu selection.) and provide 3 step volume control system.



A ↔ M automatic / manual locking set function

Automatic and manual locking mode set is possible with simple switch operation from Inside.



Auto relock function

If users do not open the door after unlocking the device it will lock itself automatically.



Double lock function

When double lock function is activated, the door cannot be opened from the outside, even with the registered card, PIN code or fingerprint. Override key can still be used.



Mute function

Door will not emit any sound when mute is activated.



Battery level indicator and alarm for battery replacement

Easy to check battery status with three step level indicator and alarm when battery replacement is required.



Trespass alarm function

When the door is opened by force an alarm will sound.



Prevent trespass and hacking

After multiple incorrect attempted entries an alarm will sound and all the functions of the lock will be suspended for three minutes. The alarm activates after three incorrect PIN/card entries and five incorrect fingerprint entries.



Random security coding

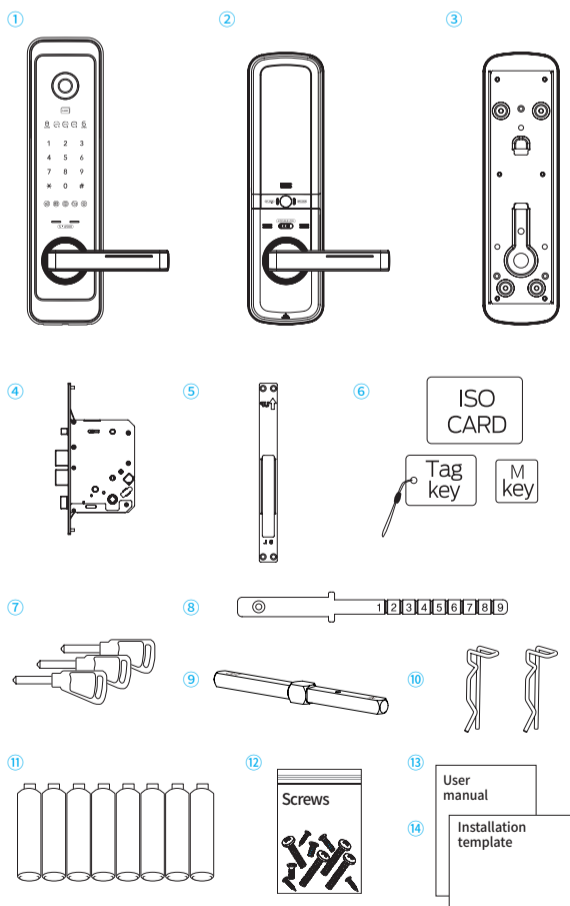
When you enter your home with other people, you may not want to show your PIN code to them. In this case, you may press any numbers randomly and then enter your PIN code at the end and you will still gain access.



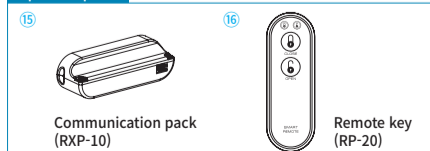
Normal mode/safety mode

Normal mode is ideal for new users or low security environments. Safety mode provides a higher security level via use of a manager PIN code. Allows individual register and delete function which is not provided in normal mode.

Product composition and components



Optional parts

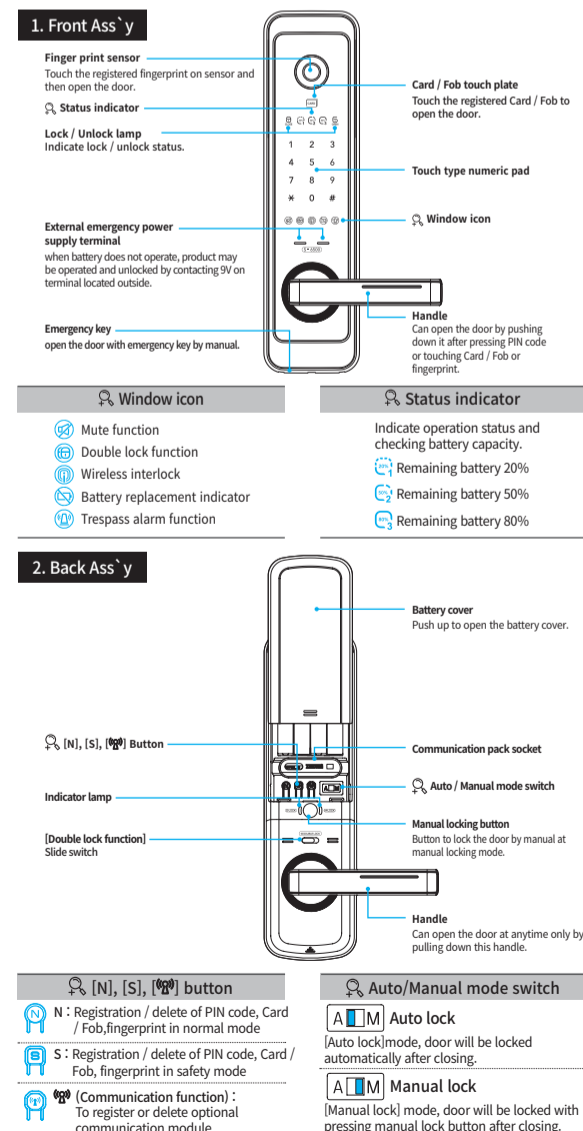


Name	Product specification	Remark
① Front Ass'y	86.6mm(W) X 331mm(H) X 30mm(D)	Including rubber pad
② Back Ass'y	82mm(W) X 310mm(H) X 33.7mm(D)	
③ Back bracket	88mm(W) X 316mm(H) X 9.2mm(D)	Including rubber pad
④ Mortise lock	105.4mm(W) X 240mm(H) X 24mm(D)	
⑤ Strike	24mm(W) X 240mm(H) X 4.5mm(D)	
⑥ Card / Fob	ISO card, Tag key, Mobile tag key	
⑦ Emergency key	3 EA	
⑧ Key tail plate	1 EA	
⑨ Handle shaft	101.7mm(W) X 8mm(H) X 8mm(D)	
⑩ Handle shaft clip	2 EA	
⑪ Battery	1.5V 'AA' Size LR6 Alkaline, 8ea(DC 6V)	
⑫ Screws	1 set	
⑬ User manual	Main User manual	
⑭ Installation template	Using for making hole at the door	
⑮ Communication pack	Communication pack	Optional
⑯ Remote key	Remote key	Optional
※ Installation condition	Door thickness 40~90mm	
⚠ High temperature warning	<ul style="list-style-type: none"> Working temperature : -15~55 C Sensor working temperature(high): 60 C + 5 C If a high temperature is detected that may cause a fire, the alarm will sound with a beeping sound for safety reasons. If the Inside body is exposed to direct sunlight for a long time and exceeds the set temperature, a beep will be generated to protect the user. High temperature detection also works with Double locking function.	

Factory setting

Item	Setting Status	Ref. page
Auto/Manual lock mode	[Auto lock]	8
Language (English/Chinese)	English	11
Normal mode / Security Mode	Normal mode	9-10
Voice guide volume (1-3 level)	3 level [Maximum]	7
Beep sound level (1~8 level)	8 level	7

Name and function of each part



Description shortcut icons

: [N] button	: PIN code	: Trespass alarm
: [S] button	: Card / Fob	: Unlock
: [*] button	: 9V alkaline battery(6LF22)	: Lock
# button icon"/> : [#] button	: User code	
: Touch the front pad	: Manager code	
: [Communication function] button	: Registration code	
	: Random code	

※ Normal mode : [N] button / Safety mode : [S] button

How to replace battery

If battery lamp in RED is flickering with sound, separate battery cover, and replace all 4 battery to new one, 6V(1.5V "AA" size LR6 Alkaline)

Additional function

How to control voice guide volume	
Min. volume	# C or # 1
Mid. volume	# C or # 1 2
Max. volume	# C or # 1 2 3
Guest PIN code (Temporary use)	
REG.	# C or # 2 RC # RC #
How to control operation volume	
Vol. up	# C or # 3 7 *
Vol. down	# C or # 3 9 *
Status checking guide	
Voice guide	# C or # 4
Check battery capacity	
Checking the battery	# C or # 5
Warning function against illegal entry or hacking	
Operate	Wrong PIN code three times/unregistered card three times/unregistered fingerprint five times
Warning alarm function against forced entry	
PIN code	* C * Card / Fob

How to apply external power in the emergency

PIN code		Card / Fob	
----------	--	------------	--

How to use random security coding function

Usage	C *
-------	-----

How to unlock / lock from outdoor

How to unlock from outdoor	
PIN code	C * Card / Fob Fingerprint

How to unlock from outdoor (Mute function)

PIN code	3-sec OFF C *
Card / Fob	3-sec OFF

How to lock [Auto lock / Manual lock] from out door

Auto lock	※ If the door is not closed correctly, warning sound can be caused. Please check and confirm the door closing status.
Manual lock	0

How to set auto locking / manual locking

Auto lock	In Auto locking mode, door will be locked automatically after closing. In Manual locking mode, door will be locked with pressing manual lock button after closing.
Manual lock	* Please do the change/registration of new code at door opened status to prevent unintentional locking.

How to lock from inside

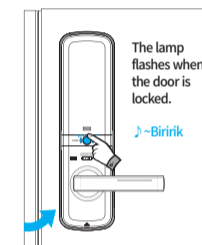
1. In Auto locking mode

When the door is closed, door is locked with beep sound with voice guide automatically.



2. In Manual locking mode

After closing door, press [open/close] button, then door is locked with beep sound with voice guide.



Note

· Before closing the door, make sure that deadbolt is not extrude.

How to lock from Inside (Auto locking / Manual locking)

1. Auto locking function

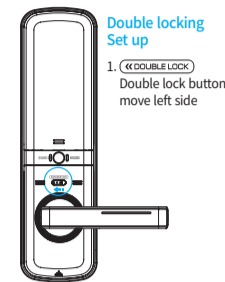
When the door is closed, it will be locked automatically.

2. Auto relocking system

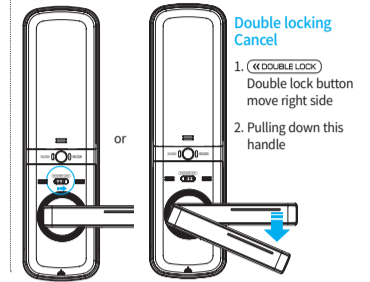
If the door is not opened within 7 seconds after input secret code, it will be relocked automatically to protect user's property.

How to set double locking function

1. [Double locking] Set up



2. [Double locking] Cancel



Note

- Please confirm that the door is properly closed. (Setting of double Locking mode is available when the door is closed.)
- With pulling down handle from Inside, double locking mode shall be released automatically.
- If the sound is set to mute, there is no status sound. only indicating lamp is flickering.

How to change Normal mode / Safety mode

- Normal mode : ideal for new users or low security environments
- Safety mode : higher security level via use of a manager PIN code. Provides individual register and delete function

· PIN code: 10 entries (6-12 digits) / Card / Fob: 20 entries / Fingerprint : 50 entries

: [N] button : [S] button : Card / Fob : Fingerprint

: User code : Manager code : Registration code

How to change from normal mode to safety mode

	1	2	3	4	5	6	7	8	9	10	11
Safety mode	3-sec		# button icon"/>		# button icon"/>		# button icon"/>				

How to change from safety mode to normal mode

Normal mode	3-sec		# button icon"/>		# button icon"/>		# button icon"/>				
-------------	-------	--	------------------	--	------------------	--	------------------	--	--	--	--

Normal mode

Normal mode	
	1 2 3 4 5 6 7 8 9 10
REG.	PIN code 1 4 RC * ... *
	Card / Fob 1 5 ... *
	Fingerprint 1 6 *
DEL.	All Card / Fob 2 5 *
	All Fingerprint 2 6 *

※ Repeat highlighted part of diagram above for continuous register or delete

Safety mode

△ Warning : Please do not forget manager code. If you forget this number should contact to your local agency.

· PIN code: 10 entries (6-12 digits) / Card / Fob: 20 entries / Fingerprint : 50 entries

: [N] button : [S] button : Card / Fob : Fingerprint

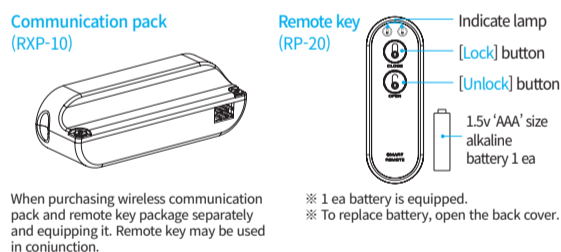
: User code : Manager code : Registration Code

Safety mode	
	1 2 3 4 5 6 7 8 9 10 11 12
REG.	PIN code 1 4 or # * *
	Card / Fob 1 5 or # # *
	Fingerprint 1 6 or # 3 times # *
DEL.	All Card / Fob 2 5 or #
	Individual Card / Fob 3 5 or # # *
	All Fingerprint 2 6 or #
	Individual Fingerprint 3 6 or # # *
Safety mode (Manager)	
Change	Manager code 8 4 or # # #
REG.	Manager Card / Fob 8 5 or # # *
DEL.	All manager Card / Fob 8 6 or # 5

※ Repeat highlighted part for continuous register or delete

Communication pack / Remote key [Optional]

1. How to install the communication pack



Installing communication pack

1. Open the inner battery cover then remove the battery
 2. Install the communication pack on the connected terminal
 3. Insert batteries after confirming the direction of ⊖ and ⊕
 4. Sound is heard when mounted correctly
- △ Caution Please fit the socket in the correct orientation.

2. How to register remote key & to unlock / to lock

· Remote key : 5 EA

: [Communication function] button : Remote unlock : Remote lock

: PIN code

To register / to delete remote key (Communication pack)

REG.	Remote key	3-sec	1	or	# button icon"/>	or	* button icon"/>
DEL.	All remote key	3-sec	2	or	# button icon"/>		

How to lock/unlock by remote key

Unlock		Lock	
--------	--	------	--

※ Repeat Highlighted part for continuous register or delete.

How to select the language

English	3	or	# button icon"/>	1
Chinese	3	or	# button icon"/>	2

About Allegion™

Allegion (NYSE:ALLE) is a global pioneer in safety and security, with leading brands like Briton®, CISA®, LCN®, Schlage® and Von Duprin®. Focusing on security around the door and adjacent areas, Allegion produces a range of solutions for homes, businesses, schools and other institutions. Allegion is a almost 130 countries.

\$2 billion company, with products sold in For more, visit www.allegion.com

Briton ■ Milite ■ LCN ■ SCHLAGE ■ VON DUPRIN