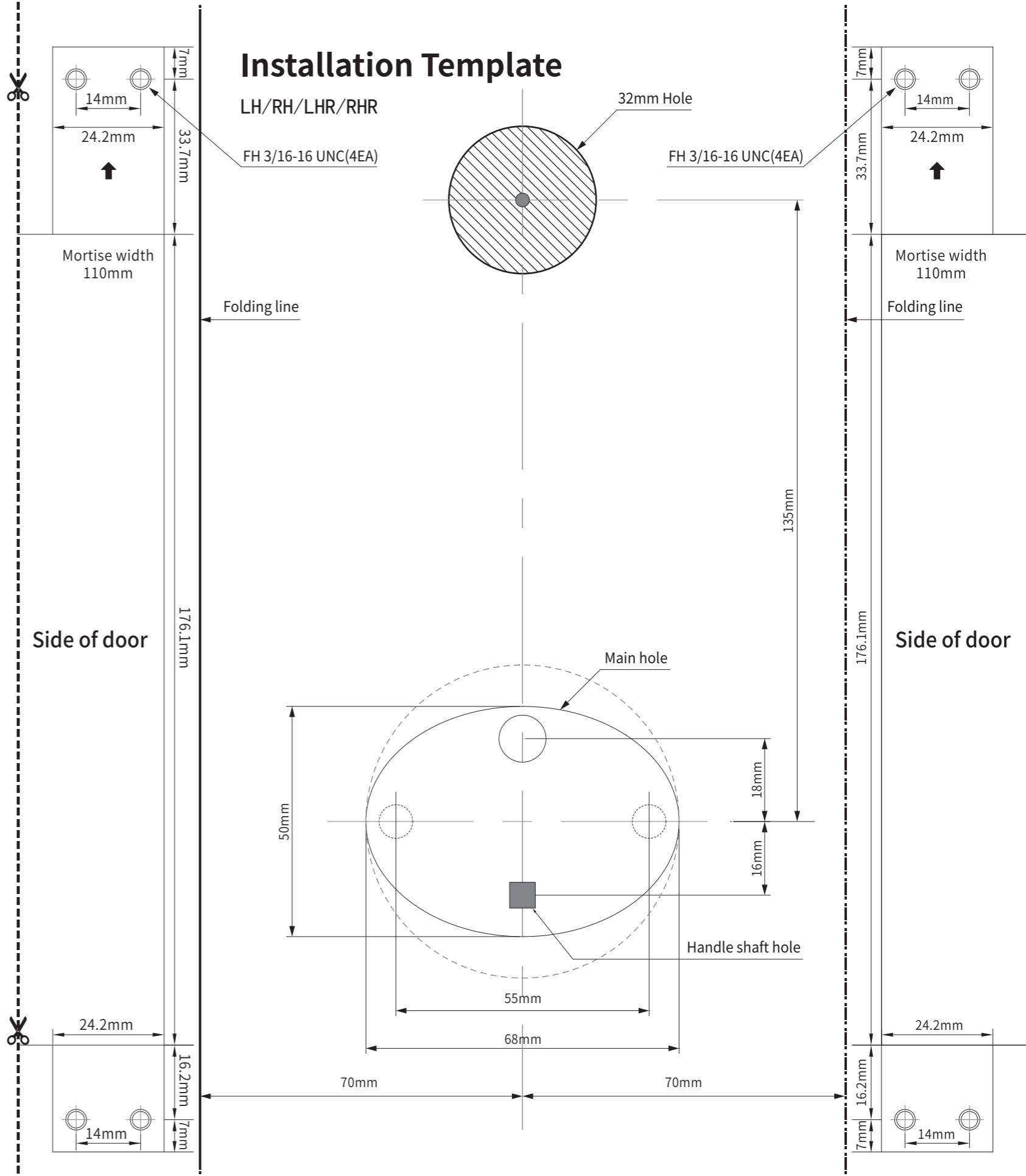
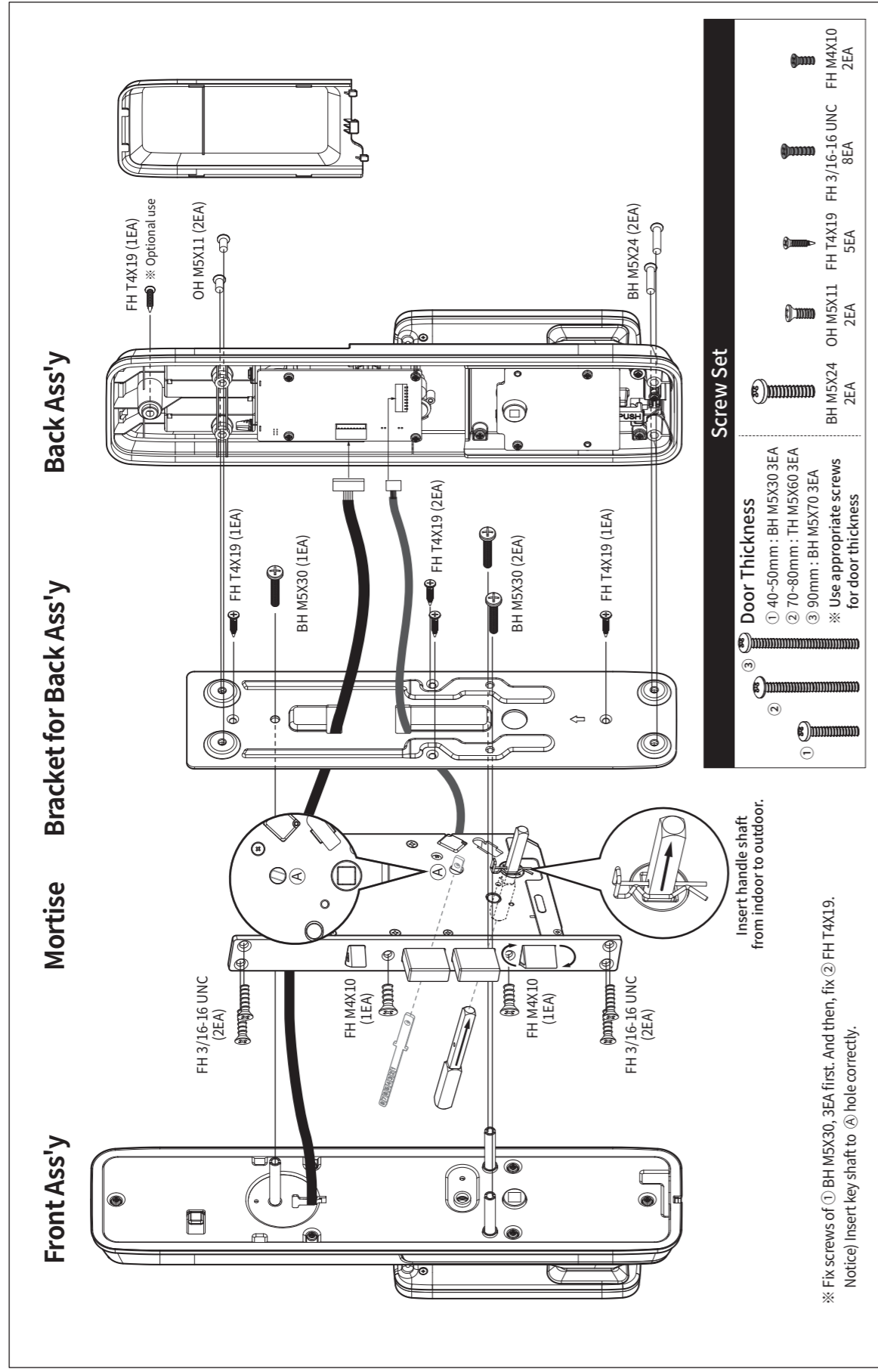


Installation Exploded View(MB7-1)

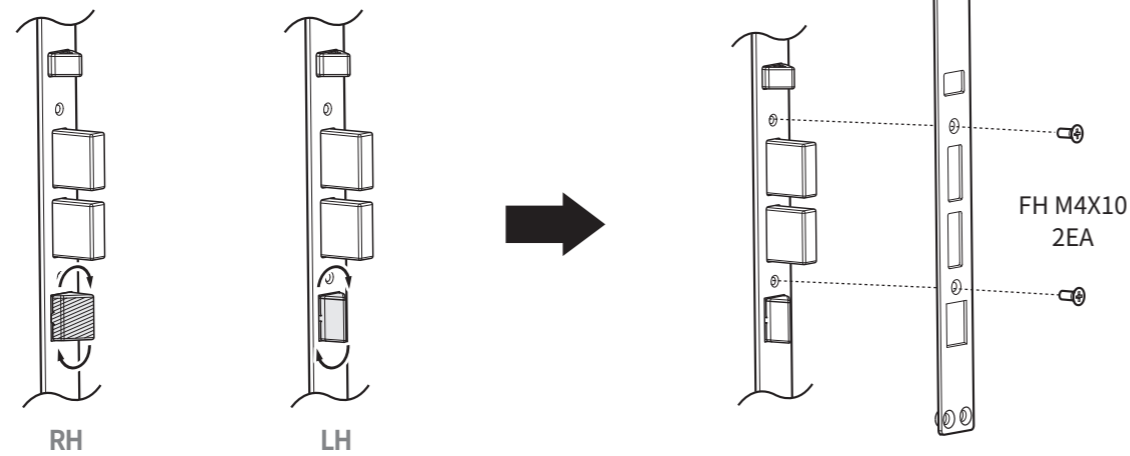


How to install - 1(Mortise Lock)

⚠ Notice

- ➔ Installation method for left handed door and right handed door is same.
- ➔ Before installation, adjust the direction of latch bolt and striker as per door opening direction.

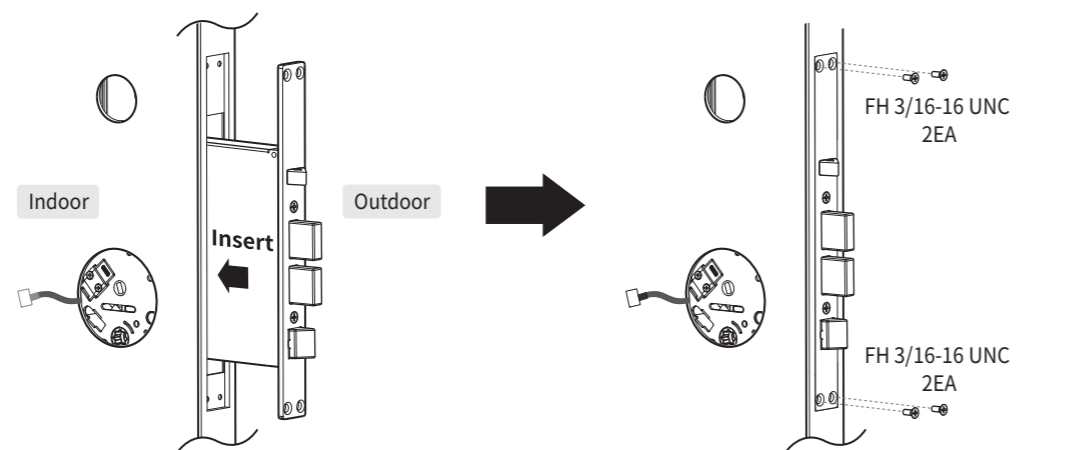
■ Change latch bolt direction



1. Rotate latch bolt.

2. Confirm the direction of latch bolt and fix the plate using FH M4X10, 2EA.

■ Install mortise

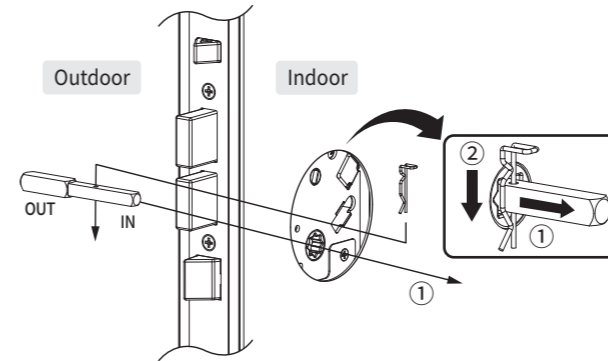


1. Insert mortise to side of door and pull out cable to indoor.

2. Fix the plate using FH 3/16-16 UNC, 4EA.

How to install - 2(Product)

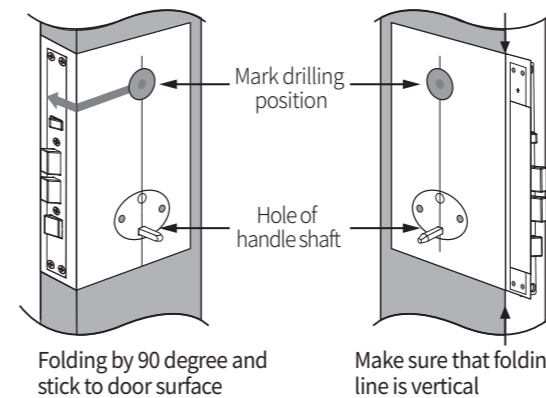
1. Insert handle shaft from outdoor to indoor and fix stop ring to the hole on indoor side of handle shaft.



2. Insert handle shaft to rectangular "Handle shaft hole" of installation template and stick the template to indoor side. Fold the template along to folding line.

3. Fix the exact position of template and mark the drilling position for hole making. Change direction of template and mark the drilling position on opposite side in same way.

Make indoor hole Make outdoor hole



Folding by 90 degree and stick to door surface

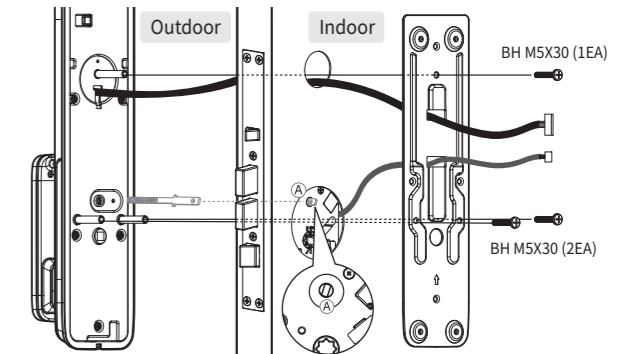
Make sure that folding line is vertical

4. Make hole as per specification. (Ø32)

5. Select Push/Pull direction of front ass'y & back ass'y before installation.

6. Put the cable of the front ass'y into the upper hole (Ø32) and pass it inwards from the outside of the door. Pass the cable through the top square hole of the bracket for back ass'y and pass the mortise cable passed from the "How to install-1 (Install mortise)" through each cable through the bottom square hole of the bracket for back ass'y.

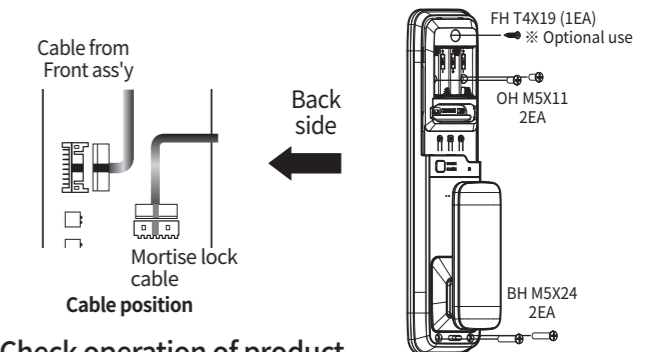
7. As per door thickness, cut the key tail plate refer to the below table. Confirm the cable is not jammed and fix the front & back ass'y by screws. (BH M5X30, 3EA)



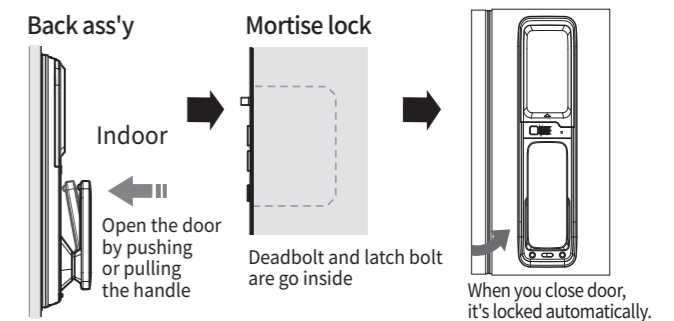
Door Thickness	Key Shaft	Door Thickness	Key Shaft
40 mm	1	90 mm	6
50 mm	2	100 mm	7
60 mm	3	110 mm	8
70 mm	4	120 mm	9
80 mm	5		

Notice) Insert key shaft to hole (A) correctly.

8. Connect two cables to Back ass'y exactly. Open the battery cover of Back ass'y and fix using screws. (Upper side OH M5X11, 2EA / Lower side BH M5X24, 2EA)



✓ Check operation of product



✓ Checking point after installation

- ➔ Insert batteries correctly and do open/close test at indoor
- ➔ Register secret code as per user manual
- ➔ Factory setting : Normal mode, Secret code "123456"