

Programming Guide

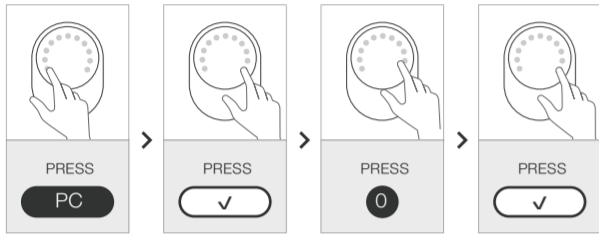
QUICK SET UP Initializing → Change PC → Add New UC → Delete preset UC 1234

P : Programming Code

Program Menu	Instruction	Program Menu	Instruction
Initializing	P → √ → 0 → √	Add Key Fob	P → √ → 13 → √ → KEY FOB NO. (1-50) → √ → KEY FOB TAG → √
Change Programming Code (Default: 0000)	P → √ → 4 → √ → New Programming Code → √	Delete Key Fob	P → √ → 14 → √ → KEY FOB NO. (1-50) → √
Add User Code	P → √ → 1 → √ → New User Code → √	Delete All Key Fob	P → √ → 15 → √
Delete User Code	P → √ → 2 → √ → User Code → √	Mobile Key Install	P → √ → 000 → √ → APP Setting mode On
Delete All User Code	P → √ → 3 → √	Delete All Mobile Key	P → √ → 333 → √
User Code On / Off (Default: On)	P → √ → 8 → √	Door lock Bluetooth On/Off (Default: On)	P → √ → 111 → √
Auto-Locking On / Off (Default: On)	P → √ → 5 → √	Door lock Easy Setting Mode	R Button * 2 times
Auto-Locking Time Set	P → √ → 6 → √ → Time (5-99sec) → √	Door lock Easy Reset	R (5sec)
Lock Sound On / Off (Default: On)	P → √ → 7 → √	Door lock Multi-Reset Setting (Default: Off)	PC → √ → 999 → √
One Time Code	P → √ → 9 → √ → One Time Code → √	Door lock Multi-Reset	PC → √ → R (5sec)

**Door lock should be in unlock position when programming the lock.

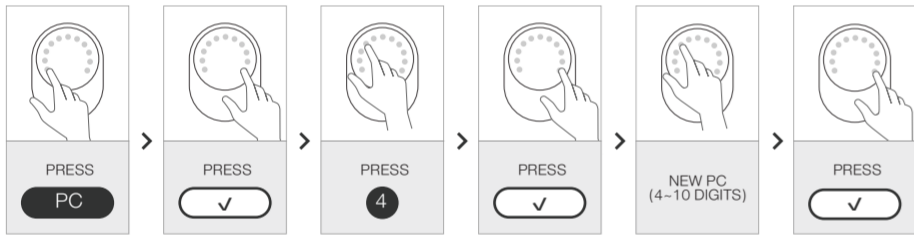
1 Initializing



REMARK

After you mount the lock on door, you need to set the door open direction. If you skip this step, lock doesn't work properly. Also please proceed this step when you reset the lock.

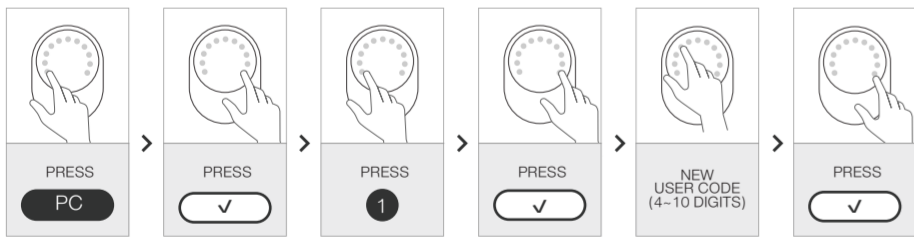
2 Programming Code Change



REMARK

For the security, please change preset PC 0000. You can use one PC only and it should be 4-10 digits in length.

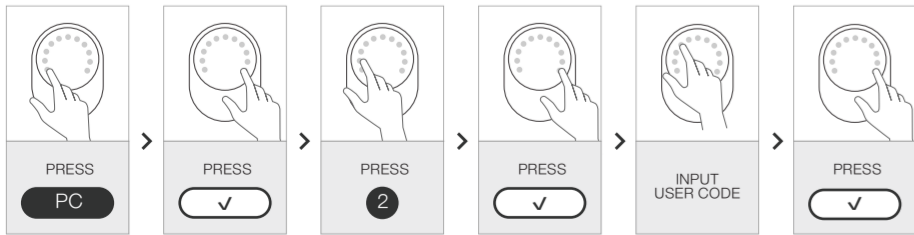
3 Add User Code



REMARK

Up to 6 sets of User Code can be stored and it should be 4-10 digits in length. Please make sure you delete preset User Code 1234 for security purpose.

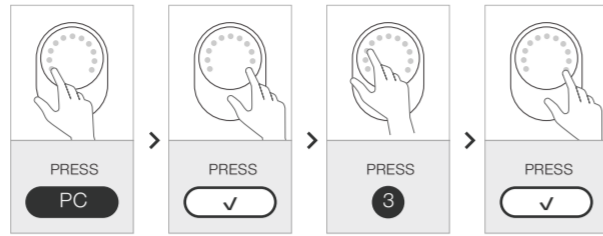
4 Delete a User Code



REMARK

You can delete stored UC including preset UC 1234. Make sure UC can be stored up to 6 sets.

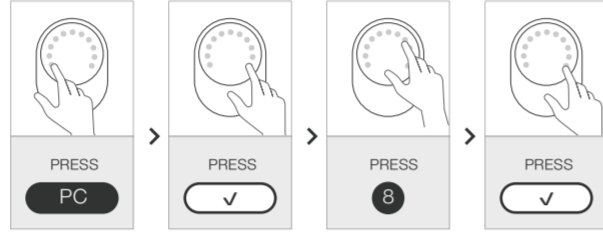
5 Delete All User Code at Once



REMARK

All User Code can be deleted at once. After you delete all User Code, door lock will not be locked. If you don't want to use User Code, please make User Code Off. (Refer to no.6 instruction)

6 User Code On/Off (Default : On)

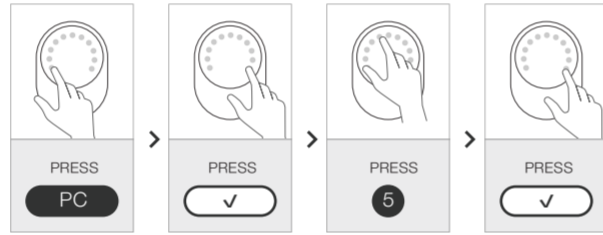


REMARK

You can set User Code Off when you want to block opening door by User Code.

By repeating the steps, you can turn on and off.

7 Auto-Locking On/Off (Default: On)

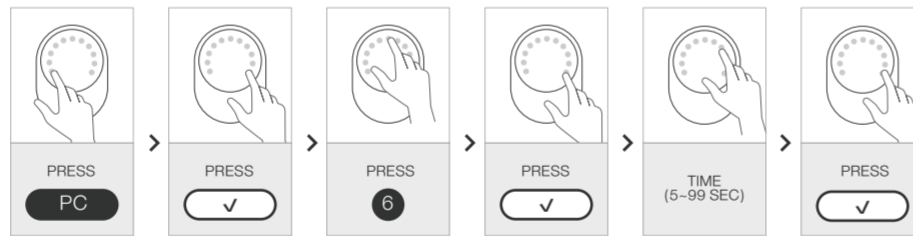


REMARK

Door lock is always locked automatically after you close the door. If you wish to turn off Auto-Locking function, please proceed above instruction.

By repeating the steps, you can turn on and off.

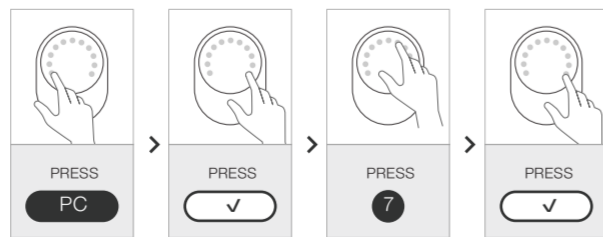
8 Auto-Locking Time Set



REMARK

Preset lock time is 5 seconds. You can change lock time between 5-99 seconds.

9 Lock Sound On/Off (Default: On)

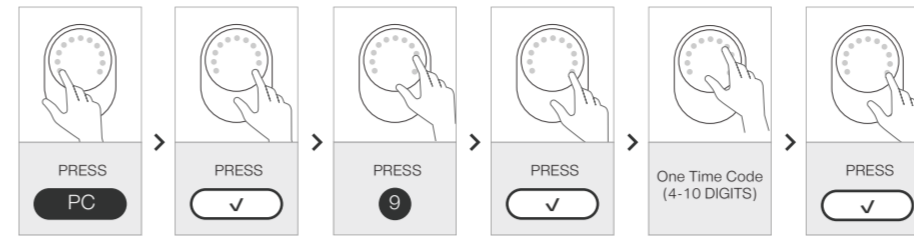


REMARK

If you wish to turn off the sound on door lock, follow the steps above. LED illumination is still functioning even though the sound is off.

By repeating the steps, you can turn on and off.

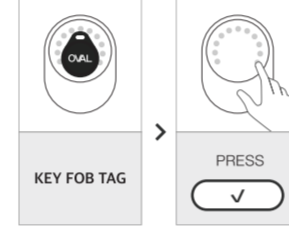
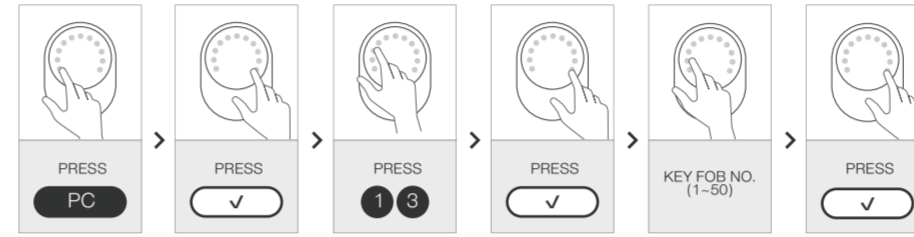
10 One Time Code



REMARK

One Time Code is one time use. Code will be discarded after use automatically. When user created few One Time Codes, it should be used in sequence of creation since the last generated One Time Code override previous one. One Time Code should be 4-10 digits in length.

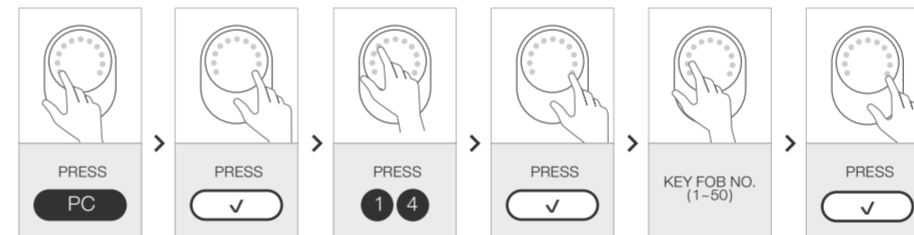
11 Add Key Fob



REMARK

Give a different number on each Key Fob to register. Up to 50ea Key Fob can be registered.

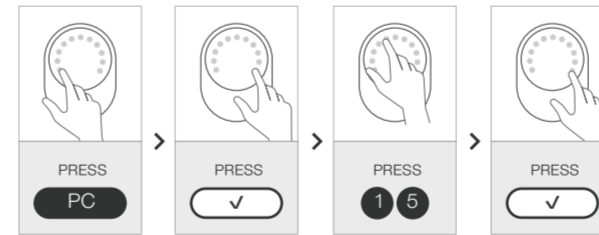
12 Delete a Key Fob



REMARK

You can delete Key Fob on lock by Key Fob number when you lost Key Fob. You don't need to tap the Key Fob when you delete it.

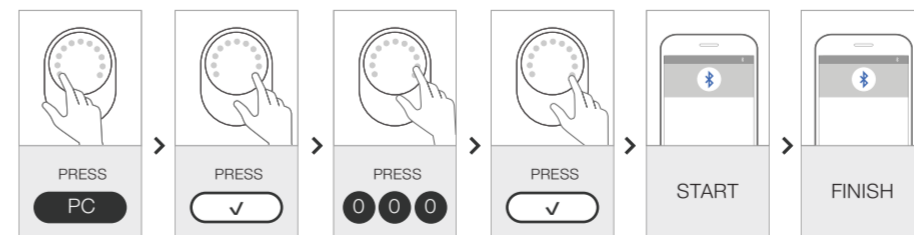
13 Delete All Key Fob



REMARK

By following above, you can delete all registered Key Fob at once.

14 Mobile Key Install (APP)

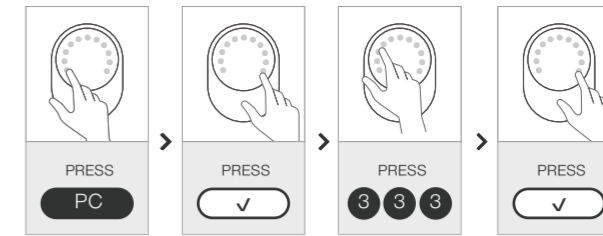


REMARK

To get a Mobile Key, door lock should be in setting mode. After make mobile setting mode on door lock, please follow the process from the app.

SMARTPHONE BLUETOOTH AND LOCATION SERVICE MUST BE ALWAYS ON.

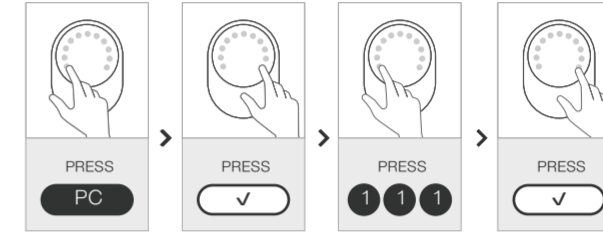
15 Delete All Mobile Key



REMARK

You can delete all registered Mobile Key on door lock at once. Registered User Code, Key Fob and Access PIN Code will not be affected.

16 Door lock Bluetooth On/Off (Default: On)



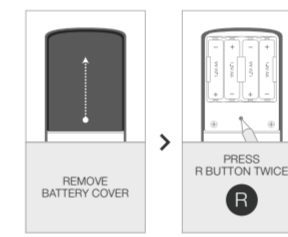
REMARK

Preset Door lock Bluetooth is On. You can turn off the Bluetooth if you want.

By repeating the steps, you can turn on and off.

PLEASE MAKE SURE DOOR LOCK BLUETOOTH SHOULD BE ON TO USE MOBILE KEY.

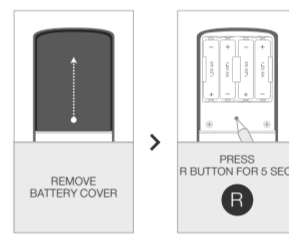
17 Door lock Easy Setting Mode



REMARK

Once you have Mobile Key, you can go into setting mode easily. Please check above.

18 Door lock Easy Reset

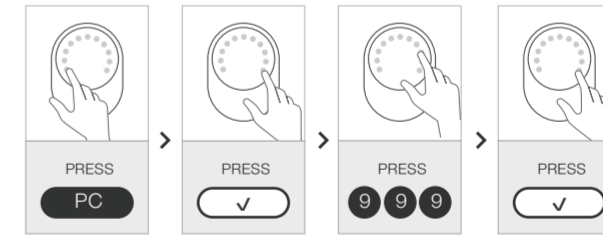


REMARK

To reset the lock, remove the battery cover from interior part and pick 'R' button for 5 seconds. Once you reset, all stored information such as User Code, Key Fob and Mobile Key will be deleted.

AFTER RESET, PLEASE PROCEED THE INITIALIZING AND CHANGE PC AND UC.

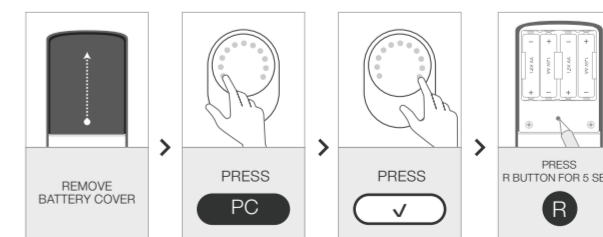
19 Door lock Multi-Reset Setting (Default: Off)



REMARK

To prevent anyone from resetting with interior R button, set Multi-Reset function. Once you enable this function, you need to put PC whenever you press R button. By repeating the steps, you can turn on and off.

20 Door lock Multi-Reset



REMARK

Once you set the Multi-Reset, you need to enter PC before pick R button.

AFTER RESET, PLEASE PROCEED THE INITIALIZING AND CHANGE PC AND UC.