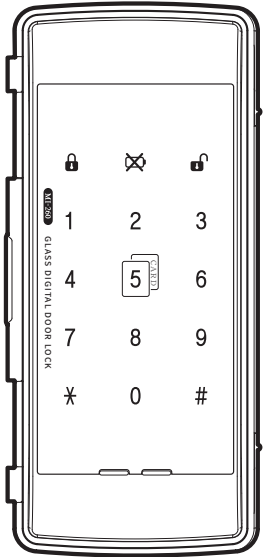




Safety precautions

- Do not disassemble or alter the lock. Assembling or Disassembling the door lock may damage the product. Damage to the product caused by unauthorized persons may result in damages to your property. Please contact our Customer Service.
- If the product generates harmful gases or smoke, please remove the batteries immediately from the product, if you do not take this step immediately, the product may suffer severe damage.
- Please keep the product away from water or any liquids. If the product is exposed to salty water or liquids, please wipe off the moisture with a soft cloth. If moisture or foreign materials penetrate the product, remove the batteries immediately and contact the Service Agency or Customer Service Center for advice. Using a product contaminated with foreign materials may cause problems.
- Please check the batteries every 6 months to see if the batteries are leaking and to check the cleanliness of battery terminals. If leakage is discovered, please wipe out with a dry cloth and replace the new batteries. In case of exposure to leakage, wash with soap and water immediately.
- Do not clean the product with flammable materials such as alcohol, benzene or thinners. Such materials may damage the surface or cause a fire.
- Batteries should not be exposed directly to heat sources or flames, or submerged in water, because they may leak or explode, resulting in severe damage. Please do not use damaged batteries.
- Do not allow the battery electrodes to make contact with metals such as keys, as the battery may overheat, causing an explosion or severe damage.
- Please do not close the door with the deadbolt in the locked position. It may damage the product or cause a malfunction.
- Do not force to pull the front cover. It may damage the product or cause a malfunction.
- Please do not mix old with new batteries or use different types. Always use new alkaline batteries. Please make sure the batteries are inserted correctly (+/-) as indicated in the battery compartment. Otherwise, it may cause a leaks or explosions.
- Please do not hang the heavy things or bag, etc on the handle. It is may damage the handle or cause a malfunction.



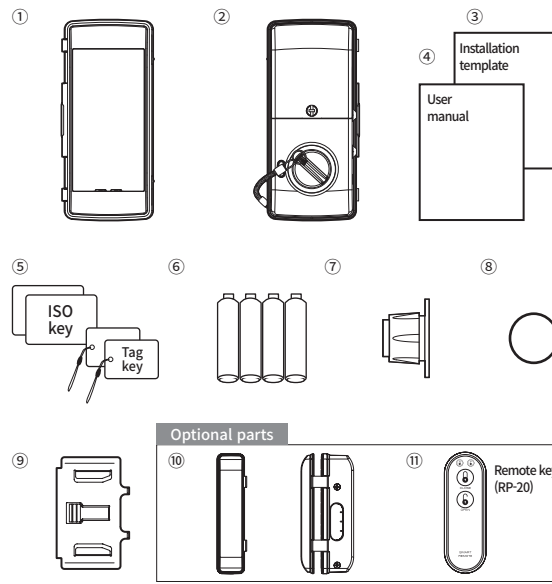
S-260T USER MANUAL

Please read before installation.

Product features

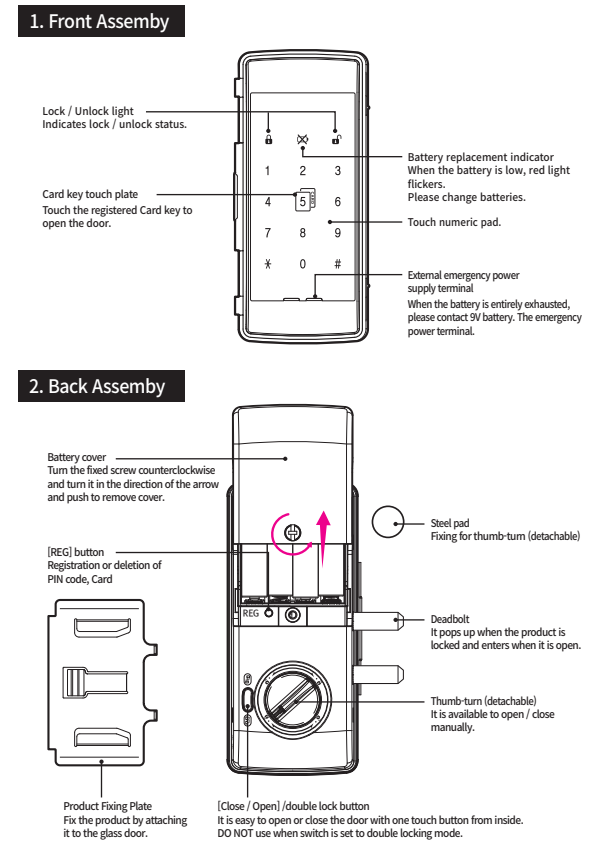
- Three ways to unlock**
Available to use PIN code, Card key or Activate.
- Left / Right-handed automatic identification system**
With no separate disassembling, both left and right-handed install is convenient.
- Separable safe knob structure**
Separable knob structure provided perfect security function when external trespassing occur using wire string.
- Open / close button disable function**
Illegal trespassing preventive system function.
- High temperature warning**
If a high temperature is detected that may cause a fire, the alarm will sound for safety reasons. (Working temperature : -15~55°C, Sensor working temperature(high) : 60°C±10°C)
- Random security coding function**
When you enter your home with friends or people, you don't want to show the PIN code to them. In this case, you may press any number randomly without limitation and then enter your PIN code to finish. Then open the door without revealing your PIN code.
- Auto re-locking function**
If users do not open the door after unlocking, it will lock automatically for higher security.
- Trespass alarm function**
When the door is opened by force with hammer or other lock is suspend with alarm sound.
- Prevent mischief & hacking**
With 5 times of abnormal try with wrong number or unregistered Card key, function of door lock is suspended for a while alarm sound.
- One touch mute function**
Open the door without any operating sound temporarily.
- Battery replacement indicator**
The alarm will sound and indicator will show when battery needs replacing.
- Volume control**
8 levels of volume.

Product composition and components



Name	Product specification	Remark
① Front Assembly	75mm(W) x 165mm(H) x 20mm(D)	
② Back Assembly	75mm(W) x 165mm(H) x 41mm(D)	
③ Installation template	English	
④ User Manual	English	
⑤ Card key	ISO Card, Tag key	
⑥ Batteries	6V (1.5V 'AA' Size LR6 Alkaline, 4ea)	
⑦ Magnet sensor	20mm(W) x 11.6mm(H), hole Ø 13	For single glass door
⑧ Steel pad	Ø 15 - 20mm	
⑨ Product Fixed Plate	73.7mm(W) x 113.2mm(H) x 3.9mm(D)	
⑩ Strike	35.2mm(W) x 161.2mm(H) x 17.4mm(D) 35.2mm(W) x 161.2mm(H) x 37.2mm(D)	Optional (For double glass doors)
⑪ Remote key	Remote key	Optional
** Installation condition	Glass door 12mm	

Name and function of each part



Factory setting

Item	Setting Status	Ref. page
Auto/Manual lock mode	[Auto lock]	7
Normal mode / Security Mode	Normal mode	9-10
Sound level (1-8 level)	8 level	6
Factory setting PIN code	123456	-

** After resetting the system, lock returns to the factory setting.

Description shortcut icons

: [REG] button	: PIN code	: Trespass alarm
: [*] button	: Card key	: Unlock
: [#] button	: 9V alkaline battery(6LF22)	: Lock
: [Close/Open] double lock button	: User code	: Door Close
: Touch the front pad	: Manager code	: Door Open
	: Registration new code	
	: Random code	

How to replace battery

If battery light in RED is flickering with sound, remove battery cover, and replace all batteries to 1.5V 'AA' size LR6 Alkaline)

Additional function

Guest PIN code (Temporary use)
REG. [REG] # [C] # [9] RC # RC #

How to control operation volume
Vol. up [REG] # [C] # [3] *
Vol. down [REG] # [C] # [2] *

Warning function against illegal entry or hacking
Operate [REG] or [Close/Open] If wrong PIN code or unregistered Card key is applied over 5 times, alarm system in activated with warning sound and all the function of door lock is suspended for a minute.

Warning alarm function against forced entry
Operate [REG] or [Close/Open]

How to apply external power in the emergency



How to use random security coding function



How to unlock / lock from outside

How to unlock from outdoor
PIN code [REG] [C] [*] [C] Card key [C] [C] [C]

How to unlock from outdoor (Mute function)
PIN code [REG] [C] OFF [C] [*] [C]
Card key [REG] [C] OFF [C] [C] [C]

How to set auto locking / manual locking
Auto lock [REG] # [C] or [C] # [5]
Manual lock [REG] # [C] or [C] # [6]

How to lock [Auto lock / Manual lock] from out door
Auto lock [REG] [C] [C]
Manual lock [REG] [C] [0] [C]
* If the door is not closed correctly a warning will sound. Please check and confirm the door status.

Note:
- In Auto locking mode, door will lock automatically after closing.
- In Manual locking mode, door will lock after pressing manual lock button when closing.
- The code should ONLY be changed when door is open to prevent unintentional locking.

How to open or close using the thumb-turn or [Close / Open] button from inside (Manual / Auto)

1. Manual mode
Press and turn clockwise to lock Press and turn counterclockwise to unlock

2. Auto mode
Press in the unlocked status, it will lock Press in the locked status, it will unlock

Exiting mode

: PIN code : Door Closed : Door Open

Setting	Outside	[REG] # [C] # [C]
	Auto mode	After remove the thumb-turn [REG] [C] [C]
Cancel	Manual mode	After remove the thumb-turn [REG] [C] [0]
	PIN code	[C] [*] [C]
	Card key	[C] [C] [C]

** When setting up the security mode, an alarm sounds when the door is opened from inside.
** Opening the doors from outside the security mode is automatically unlocked.

How to change Normal mode / Safety mode

· Normal mode: Regular use.
· Safety mode : High security mode with manager function added, provides individual register and delete function which is not provides in normal mode.

· PIN code: 10 EA (6-12 digits) / Card key: 50 EA / Manager PIN code: 1 EA / Manager Card key: 3 EA

REG. : [REG] button : Card key UC : User code
MC : Manager code RC : Registration new code

How to change from normal mode to safety mode

	1	2	3	4	5	6	7	8	9	10	11
Safety mode	[REG]	[C]	[*]	[C]	[*]	[C]	[*]	[C]	[*]	[C]	[*]

How to change from safety mode to normal mode

Normal mode	[REG]	[C]	[*]	[C]	[*]	[C]	[*]	[C]	[*]	[C]	[*]
-------------	-------	-----	-----	-----	-----	-----	-----	-----	-----	-----	-----

Normal mode

	1	2	3	4	5	6	7	8	9	10
REG. PIN code	[REG]	[C]	[*]	[C]	[*]	[C]	[*]	[C]	[*]	[C]
Card key	[REG]	[C]	[*]	[C]	[*]	[C]	[*]	[C]	[*]	[C]
DEL. All Card key	[REG]	[C]	[*]	[C]	[*]	[C]	[*]	[C]	[*]	[C]

** Repeat highlighted above for continuous register or delete
** Please register/change with the door open.

Safety mode

Warning : Do not forget manager code. Lock will need replacement.
· PIN code: 10 EA (6-12 digits) / Card key: 50 EA / Manager PIN code: 1 EA / Manager Card key: 3 EA

REG. : [REG] button : Card key UC : User code
MC : Manager code RC : Registration new code

Safety mode

	1	2	3	4	5	6	7	8	9	10	11	12
REG. PIN code	[REG]	[C]	[*]	[C]	[*]	[C]	[*]	[C]	[*]	[C]	[*]	[C]
Card key	[REG]	[C]	[*]	[C]	[*]	[C]	[*]	[C]	[*]	[C]	[*]	[C]
DEL. All Card key	[REG]	[C]	[*]	[C]	[*]	[C]	[*]	[C]	[*]	[C]	[*]	[C]
Individual Card key	[REG]	[C]	[*]	[C]	[*]	[C]	[*]	[C]	[*]	[C]	[*]	[C]

Safety mode (Manager)

REG. Manager Card key	[REG]	[C]	[*]	[C]	[*]	[C]	[*]	[C]	[*]	[C]	[*]	[C]
Change Manager code	[REG]	[C]	[*]	[C]	[*]	[C]	[*]	[C]	[*]	[C]	[*]	[C]

** Repeat highlighted above for continuous register or delete.

How to hold or release the user's PIN code / Card

Hold	[REG]	[C]	[*]	[C]	[*]	[C]	[*]	[C]	[*]	[C]	[*]	[C]
Release	[REG]	[C]	[*]	[C]	[*]	[C]	[*]	[C]	[*]	[C]	[*]	[C]

How to set alarm by thumb-turn

	1
Setting Thumb-turn alarm	[REG]
Cancel	[REG]

** Alarm for 2 minutes after the thumb-turn (separable) falls when door is closed
** If an alarm sounds for 2 minutes, use the PIN code or Card key to turn it off.
** The audible alarm will sound whenever the thumb-turn (separable) drops until the audible alarm is disabled.

System reset

1. Normal mode
1. Remove a battery (as picture) and press the [Close/Open] button.
2. Press [REG] button and insert a battery. (Before removed one)
3. Input (tag) PIN code or Card key.
4. Press the [#] button for 3 seconds.
5. System reset is completed.

2. Safety mode(Manager)
1. Remove a battery (as picture) and press the [Close/Open] button.
2. Press [REG] button and insert a battery. (Before removed one)
3. Input (tag) Manager code or Card key
4. Press the [#] button for 3 seconds.
5. System reset is completed.

Remote key (Optional)

Remote key (RP-20)
** 1 ea battery is equipped.
** To replace battery, open the back cover.

How to register remote key & to unlock / to lock

· Remote key : 5 EA

REG. : [REG] button : Card key UC : User code C : PIN code
MC : Manager code [6] : Remote unlock [C] : Remote lock

To register / to delete remote key (Normal mode)

REG. Remote key	[REG]	[C]	[*]	[C]	[*]	[C]	[*]	[C]	[*]	[C]	[*]	[C]
DEL. All remote key	[REG]	[C]	[*]	[C]	[*]	[C]	[*]	[C]	[*]	[C]	[*]	[C]

To register / to delete remote key (Safety mode)

REG. Remote key	[REG]	[C]	[*]	[C]	[*]	[C]	[*]	[C]	[*]	[C]	[*]	[C]
DEL. All remote key	[REG]	[C]	[*]	[C]	[*]	[C]	[*]	[C]	[*]	[C]	[*]	[C]

How to lock/unlock by remote key

Unlock	[6]	[C]
Lock	[C]	[6]

** Repeat highlighted above for continuous register or delete.

Product Warranty

Our goods come with guarantees that cannot be excluded under the local consumer law. You are entitled to a replacement or refund for a major failure and compensation for any other reasonably foreseeable loss or damage. You are also entitled to have the goods repaired or replaced if the goods fail to be of acceptable quality and the failure does not amount to a major failure.

Australia Phone 1800 098 094 Email auinfo@allegion.com www.allegion.com.au	New Zealand Phone 0800 477 869 Email nzinfo@allegion.com www.allegion.co.nz
South East Asia Phone +65 6488 2562 Email sea.info@allegion.com www.allegion.com	Middle East, India & Africa Phone +971 4 818 8999 Email contactmea@allegion.com www.allegion.com/MEA

